



EWELL PARISH NEWS

The monthly newspaper of St Mary the Virgin Ewell

No.463

August 2011

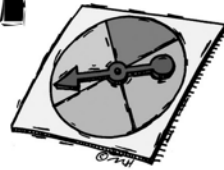
60p



Sharing the Love of Christ, the Light of the World, with the people of Ewell

ST. MARY'S CHURCH, LONDON ROAD, EWELL

TWO DAY GAMES



EXTRAVAGANZA

**WEDNESDAY 24TH and
THURSDAY 25TH AUGUST
2011**

11am – 3PM



**Book by Friday 12th August. For children aged around 5-12.
Places limited, first-come first-served. Forms available
at www.stmarysewell.com or from the church office.**

CONTENTS

The Vicar Writes..... 2
Susanne Parker Miller's
Exhibition..... 4



Suggested prayers..... 5



EVF Report.....6



Shakespeare's Sonnet No.
129.....7
Food for thought 7



All creatures great & small .. 8



Children's pages..... 9 & 10
Calendar for August.....12
From the Parish Records..12

The Vicar writes

At the "Games Extravaganza" in August, children who attend will play and design all kinds of games, from outdoor games to board games. Board games are my own particular interest and hobby, especially what are sometimes called modern European strategy games. As a Vicar, I've sometimes wondered if there are many works of theology that have been written about board games, and though I have not yet made an exhaustive search, I did come across a 13th century Castilian work commissioned by King Alfonso X, beautifully illuminated and illustrated. Alfonso wrote that he believed God intended everyone to enjoy themselves with board games, including "those who like to enjoy themselves in private to avoid the annoyance and unpleasantness of public places, or those who have fallen into another's power, either in prison, or slavery, or as seafarers, and in



general all those who are looking for a pleasant pastime which will bring them comfort and dispel their boredom." He tells the story of an ancient Indian king who sent his three wise men out with instructions each to bring back games that would illustrate their own philosophy of life.

One wise man brought chess to the king, to demonstrate that brains were most important; the next brought dice, to illustrate his belief that luck was all-important; and the third brought a game similar to backgammon, and said the best of all was one who could draw upon both luck and skill, for this was called prudence.

It's a nice story, and I'm sure King Alfonso makes good points with it, but it seems to me that his first point is the best. We play games for enjoyment. Despite what he says about games being a private activity, they are also essentially social. In parishes like our own Ewell parish, at the time Alfonso was writing, the church would have organized many social activities, from village fairs (a great tradition that still of course continues!) to parish ales. It might seem odd to be writing in a Vicar's column about fun and social activities, but a central part of Christianity is that we are not Christians alone. We come together in the fellowship of the Holy

St Mary the Virgin EWELL PARISH CHURCH 020 8393 2643

Website: www.stmarysewell.com

CLERGY

Vicar: The Reverend Russell Dewhurst MPhys BTh LLM
Email: vicar@stmarysewell.com

Honorary Assistant Priest: The Reverend Patrick Miller MA PhD

READER

Mrs Wendy Varney 020 8393 5212

CHURCHWARDENS

Mr Jonathan Gocher 020 8224 5942

Mr Malcolm Lawther 020 8224 6693

Visiting Co-ordinator

Mrs Wendy Paxman 0208 224 2851

SUNDAY AT ST MARY'S

0800 HOLY COMMUNION

0930 SUNG EUCHARIST

The Wayfarers and the Sunday School meet in conjunction with this service, and there is a Crèche provided in church.

There is coffee in the church hall between the 9.30 and 11 o'clock services on Sunday mornings, to which all are welcome, and especially newcomers and visitors.

1100 SERVICE

There is a wide variety of services in our 11 am service. Sometimes traditional Choral Mattins or a traditional Sung Eucharist, at other times we have a short and lively toddler service, baptisms, or a family service. See the calendar on the back page for more details.

1730 EVENING PRAYER (as advertised)

Usually a simple said service, but sometimes Choral Evensong.

Occasionally there are variations from this pattern; details are given in this paper, on the Notice Board or on the Weekly Notes available on Sundays.

ON WEEKDAYS

Morning prayer is *usually* said at 9 am Mondays-Thursdays, in church. See the Weekly notes or phone ahead to make sure. The Eucharist is celebrated on Tuesdays at 10 am, in the Parish Room (entry through the door on the Church Street side of the Church).

THE PARISH OFFICE

Administrator:

Mrs Lynne Yuille 020 8393 2643 (Office)

Office email: parishoffice@stmarysewell.com

St Mary's Church is in London Road, Ewell, and the Parish Office is in the Sacristy on the south side of the church.

The Office hours are normally 9.30-12.00 Mon, Tues, Wed and Fri, but please check before visiting as appointments are usually needed.

The postal address is:

C/O Ewell Vicarage, Church Street, Ewell KT17 2AQ.

EST.1934
A.E. BOOTH & SON
REPAIRS TO
ANTIQUE &
REPRODUCTION
FURNITURE

300 Hook Road, Hook
 Chessington KT9 1NY
 020 8397 7675

YOGA,
REFLEXOLOGY
& much more

Pavana Therapies caring
 holistically about your
 overall health and lifestyle

Yoga Classes
 Tues 10-11.30 am (Gentle)
 Tues 7.45-9.15 pm (Antenatal)
 Thurs 5.45-7.15 pm (General)
 Thurs 8-9.30 pm (General)

For further details call
 020 8873 2843 / 07973 410375
 enquiries@pavanatherapies.co.uk
 www.pavanatherapies.co.uk

St Mary's
Toddler
Groups

Sessions are held on:
 Monday afternoon,
 Thursday and Friday
 mornings during term
 time in the church
 hall.

For more information:
 Tel. 020 8393 4804

Spirit; together we are the Body of Christ. Activities that build up community, then, are really at the heart of what the Church is all about. St Mary's is a community that takes worship and Christian duty seriously, but also takes fellowship seriously too.

FAIR WEATHER

The Ewell Village Fair is reported in full elsewhere in these pages, but I wanted to take this opportunity to thank everyone who took part: many volunteers who put in hours of work on the day, before, and after. The fair would not be possible without their dedication. In particular, all our thanks should go to this year's organizer Alison Archer-Lock who made such a fine job of putting the fair together. This year's fair will be remembered in part because of the heavy rain-- when it comes to weather, we can only ever play the hand we are dealt, and given the wet I think Ewell absolutely made the best of the day. There were great spirits all round, camaraderie, fun, and excitement, and everyone who braved the elements seemed to be having a terrific time. We showed, I think, that come rain or shine, Ewell knows how to hold a great fair.

IN CHURCH IN AUGUST

August is a quiet month in church. We suspend the regular weekday services during the whole month. The Wednesday coffee morning in the church hall (10.30-12) continues every week, though, and all are welcome to come along. On the first three Sundays 7, 14, and 21 there will be just two morning services. Said Holy Communion will take place at 8am. The 9.30am Eucharist will be simpler than usual, with the choir on holiday. Apologies to the 11am regulars, but we have not been able to staff an 11am service for these weeks. On Wednesday 24 and Thursday 25 there will be a Games Extravaganza in the church, hall, and grounds. Children aged around 5 to 12 are invited to St Mary's for two days of activities with indoor and outdoor games, craft and food. Each day will start at 11am and finish at 3pm. Places are limited, first-come first-served, there are still places at the time of writing. You can get an application form from the back of the church, parish office or apply via the website.

Sundays return to normal on Sunday 28, which will be St Mary's dedication festival, when we celebrate the building and consecration of St Mary's in 1848. Services to celebrate this occasion will be 8am Holy Communion, 9.30am Procession and Sung Eucharist, 11am Choral Mattins. On the same day, Sunday 28 August, at 10.30am-- i.e. between services-- there will be an Extraordinary Meeting of Parishioners in church to elect a new churchwarden. The Gocher family, who have been at the heart of St Mary's for many years, are moving to Hertfordshire following Vicky Gocher's appointment as headmistress of Aldenham Prep School. We shall all miss Jonathan, Vicky, Rebecca, and Charlotte very much. Jonathan's departure from the parish means that we need to elect a new churchwarden, hence the meeting, which will have only the one item of business. Looking ahead to September, there will be a farewell party for the Gocher family in the church hall on 11 September at 6.30pm (after evensong), and I know many readers of EPN will want to come along to wish the Gochers all the best for the future.

Your friend and Parish priest
 Russell Dewhurst

WA TRUELOVE & SON LTD
 INDEPENDENT FAMILY FUNERAL DIRECTORS
 & MONUMENTAL CRAFTSMEN SINCE 1885

Serving the local community

- International repatriation
- Monumental masonry
- Horsedrawn funerals
- 24 hour call out service
- Home visits available

For further details about
 Truelove guaranteed
 pre-arranged funerals
 Call FREEPHONE
0800 074 3797

EPSON Tel: 01372 723337 14/18 Church Road
 Branches also in: Banstead • Caterham • Cheam
 Coulsdon • Mitcham • Morden • Sutton • Wallington
 www.wa-truelove-and-son.ltd.uk email: funerals@wa-truelove-and-son.ltd.uk

To hire the
 Church Hall
 please contact

020 8394 0453

for full details of
 cost and availability

**PAINTER &
 DECORATOR**

A.L. BOVIS

Reliable friendly service
 for all exterior and interior
 household maintenance
 and improvements
 Free estimates given

01737 359581

ENQUIRERS' GROUP AND CONFIRMATION

There will be an enquirers' group on Wednesday evenings from 14 September - 5 October. We'll meet at 8pm for an hour's discussion, with tea and coffee. This group will meet four times and it's something we're putting on not for regular churchgoers, but for those who want to talk and find out about Christianity whatever their own beliefs. So if you would like to opportunity to ask a Vicar some questions, or if you have come along to a service or two and want to talk about what Christians believe, you will be more than welcome. You don't have to have any particular beliefs and you won't be expected to sign up to anything.

The topics we'll discuss at the Enquirers' Group are: Who is Jesus? What difference does it make being a Christian? Why is there suffering in the world? Why go to church?

CONFIRMATION

The Epsom Deanery confirmation this year will be at St Mark's church, Tattenham Corner on Saturday 12 November at 6pm. The service involves the Bishop laying his hands on each candidate during the service and praying for the gifts of the Holy Spirit. It is full membership of the Church. To be confirmed, you need to have been baptized (i.e. Christened), but if you haven't been baptized already this can take place during the confirmation service.

ADULTS

There's no expectation that anyone coming to this enquirers' group (see above) will go on to confirmation. However, anyone who is thinking of confirmation is warmly invited to come along to the enquirers' group as part of preparation for confirmation. The adult confirmation preparation itself will follow on from the Enquirers' Group when that finishes in October: we'll meet a few more times to discuss what Confirmation means, the Bible, prayer, and Holy Communion, again on Wednesday evenings from 12 October.

JUNIORS

We are planning the classes for juniors in the parish room at 4.30pm on Mondays, from 12 September till 7th November, skipping 24 October as it's half-term. Each session will last an hour. We'll talk about what it means to be a Christian as we grow towards adulthood, about difficult choices and issues we all face, about prayer, and about what we can do as followers of Jesus to make a difference in the world.

WHAT TO DO IF YOU ARE INTERESTED IN THE ENQUIRERS' GROUP OR CONFIRMATION

Please contact the Vicar, the Revd Russell Dewhurst, on 0208 393 2643 or vicar@stmarysewell.com to find out more or to sign up.

EXHIBITION AT BOURNE HALL

12 - 17 SEPTEMBER 2011

SUSANNE PARKER



Stained Glass: The images for this show of stained glass mosaics are mainly taken from the local environment. We see pictures of woods, thickets, landscapes, scenes from the Hogg's mill river and the local natural environment. She uses photographs by Clare Owen, Marion Rao, Alan Carlson and David Dance for inspiration, often translating a realistic image into the medium of glass. This process changes the design as glass is rigid, brittle and can only be cut to show a minimum of detail. In this way the glass becomes stylized and abstracted.

Jewellery: Susanne has assembled a range of stones, all semi precious, into necklaces, bracelets and earrings. One of the fascinations of jewellery, such an ancient craft, is the usage of mined natural material. So whilst glass is in a sense an artifice and produces an abstraction of nature, the stones make up in directness and relationship. They are literally the product of earth. This year she has 2 stunning models to show her jewellery, her two sisters Annette and Therese!

MARION RAO

Photography: Marion has been a passionate photographer of unusual scenes near at hand. Amongst her many topics are a series of gravestones from the local Parish church St Mary's. She uses with artistic skill the unusual angles and zooms into details, such as a spider web on the edge of a cross and creates thereby a novel interest in a seemingly sombre topic. Her graveyard scenes remind one of the German romantics in their eternal, time spanning calm, speaking of other values than the short term, yet they are embedded in the here and now through their surroundings of flowers, spider webs or stark lights and clouds. Amongst her collection are a series of still lives which are in their arbitrariness like a collection of surrealist objects trouvés.

CLARE OWEN

Electronic Finger-painting: Clare has used this amazing technique to create images of architecture and landscape on the spot. She uses her forefinger directly on the screen of her iphone or laptop and draws images from source. The drawings then get filled in on screen with colour and when printed out they look like a mixture of watercolours and pen drawing.

VRENI HAESSIG

Weavings: Vreni represents a contrast to the other exhibited works. She produces stark, sparse images of abstract squares. There is no hint of representation, no need to allude to the world other than that of the relationship of the shapes and squares to themselves. Is there some symbolism here or are her images like those of Mondrian in their uncompromising abstract geometrical nature? They sit, like a Rothko, alone in their atmosphere and just exist.

Greenfield

and Company


Surveyors and Estate Agents

Property Lettings and Management


Ewell Village Branch (Est. 1923)


55 HIGH STREET, EWELL

020 8393 0077



Also at Tolworth,
Surbiton & Chessington





Specialising in this area for over 70 years

PROFESSIONAL AND PERSONAL SERVICE

SUGGESTED PRAYERS

O God, who art the help and refuge of thy children; from everlasting to everlasting thou art God. In our weakness thou art strength; in our darkness thou art light; in our sorrow thou art comfort and peace. We cannot number thy blessings; we cannot declare thy love. For all thy goodness we praise and bless thee. May we ever live as in thy presence and serve thee with the service of our daily lives.

Father, I thank thee for all thy gifts,
 For the life-giving sun and the life-giving rain,
 For the woods and the fields,
 For the flowers and the birds,
 For the rivers and the sea,
 For the hills and the valleys,
 For the glory of the open sky,
 For eyes to see and health to enjoy.
 Everything around me rejoices,
 Make me also to rejoice and give me a thankful heart.

Lord Jesus, we thank thee for taking care of us day by day, and for the people who work for thee all over the world. We pray for doctors and nurses and relatives, who care for the deaf, the blind and crippled people; for all who sail on the seas; for air pilots and train drivers; for preachers and ministers all over the world; for all teachers; for our own families, our friends and neighbours. We ask thee to bless them all.

Dear Father God, help us to love and not to hate. Help us to bless and not to curse; Help us to pray for and do good to those who give us cause to dislike them.

I commit myself to thee, Lord Jesus, make me thine own;

I commit myself to thy mercy, cleanse me from all my sins,

I commit myself to thy bounty, grant me the riches of thy grace;

I commit myself to thy wisdom, teach me to know thy will;

I commit myself to thy power, keep me from all evil.

To the love of thy heart I commit all who are dear to me, all are dear to thee.

Keep us and unite us to thee and to one another this day and forever.



Save the Children

AN INDIAN THEMED CURRY EVENING

WITH LOCAL PRESIDENT, THE LORD TOPE CBE ATTENDING

£12.50pp

SAT 3 SEPTEMBER 2011

6.45PM FOR 7.15PM

ST. PAUL'S CHURCH CENTRE
NORTHEY AVENUE, CHEAM SM2 7HS

HIGHLIGHTS INCLUDE

PRELIMINARY NIBBLES & TWO-COURSE MEAL

CHARITY AUCTION AND ILLUSIONIST

B.Y.O. - NO BEER OR LAGER



CALL MARY - 020 8393 4907 OR JENNY - 020 8642 4559

ALL PROCEEDS DONATED TO SAVE THE CHILDREN UK AND WORLDWIDE FUNDS



E V F

EWELL VILLAGE FAIR



We had plenty of warning that Saturday 16 July would be wet. We begged and borrowed extra gazebos, sorted out wet weather contingencies and the laminator almost went into meltdown as we weatherproofed signs and notices.

Fortunately Friday was a beautiful day and we were able to set up the fair without problems. As the afternoon progressed more and more people joined us and by 6.30 we had a host of people putting up gazebos, delivering stock to stalls and sorting out the side-shows, so that by the time we left the fair was well and truly ready to go.



Saturday dawned dry(ish) but grey. It was lovely seeing the fair come alive as people put the finishing touches to their stalls. As the Morris men were dancing through the village and "Refreshing the Wastrel" at the Lock Up, the Blue Starz Cheerleaders were getting the arena events off to a great start. At 11 the Mayor officially opened

the fair and was presented with a basket of flowers by Michael Madell. The Morris Men were dancing as the rain started to come down but they carried on fortified in the knowledge that the beer tent was only a tankards throw away.

The children's fancy dress competition and the cake competition were judged by the Mayor who was impressed with the time and effort which had gone in to preparing for both events. The rain was now heavy, but the Dunkirk spirit shone through with stallholders remaining in post despite leaking gazebos and soggy lunches. The Southern Retriever Display Team performed despite the rain (the dogs didn't mind – not so sure about their owners. The Fitznells Concert Band were treated to a Punch and Judy show (relocated inside the small arena



marquee) as they prepared to perform. Also, for possibly the first time in it's history, the Church played host to a team of cheerleaders as Wallace Fields Junior School used it to show off their talents.

Another first for the year were tours of the Church, Churchyard and Village and thanks must go to Charles Abdy and Jeremy Harte for guiding these. The tours were all very well received and we hope we will be able to repeat this in future years. The Church was also open all day and had lots of visitors.

By the time Ewell Grove Choir were ready to sing the rain was clearing up. They decided to take the risk and performed some delightful songs in the arena. This was the start of a great afternoon. All of a sudden, ice creams appeared, the fair was filled with lions, tigers and butterflies as the face painting took off, and the atmosphere that is unique to Ewell Village Fair emerged. The dogs performed again, Club Energize finished off events in the arena and Chris Grayling did the honours in picking the Grand Draw winners. As the nice weather had arrived, the fair stayed open a bit longer than planned and people stayed on enjoying the event.

The fair is only possible because of all the time and effort which goes into it. There are far too many people to thank individually, but we are very grateful to everyone who helped in any way at all, be it setting up, manning a stall or sideshow, providing refreshments, clearing up or spending money.. We would like to thank Ewell Castle School for allowing us the use of Glyn House grounds, and their site team who were brilliant in sorting things out.

Next years fair is booked for 14 July. Just realised that is St Swithin's day....

All Creatures Great and Small

It was a beautiful warm and sunny Sunday 26 June when a small group of animals waited with their owners to go into the church for their special service. Dogs, cats guinea pigs and even a mouse were among the 'congregation'. There were also numerous and varied stuffed animals brought by those who were unable to bring along a live pet.

Dr Patrick Miller welcomed everyone and opened the service inviting all to join in the Children's Welcome - '**Good morning God, You're Great**'. Kathy Burgess added her welcome ensuring that all pets, living and stuffed, were included in the service and this was followed by the apt hymn "All Creatures of our God and King".

Vicky Gocher's reading from Genesis 20 - 2:4 told of the creation of all living things. The St. Mary's Choir then gave their rendering from "Captain Noah" which named all the animals of creation. I wonder how many of the creatures mentioned could be remembered by any of us.

A friend of Kathy's - Lesley Fisher then gave a talk about her horse Jasper showing a photo of him jumping a gate. At 18 years Jasper is quite old now but this large four-legged friend is still loved and cared for by Lesley and her family. Lesley talked about Jasper's life through his long years - his personality, his likes and dislikes. She discussed why garlic was mixed with his feed - this apparently is to prevent the flies from worrying him. Most important too she spoke of the rap-



port the family have with Jasper emphasising the mutual trust that must exist between animal and owner. This is a two way trust which all owners establish with their lovely pets. It is the owners of the pets who set their behaviour.

The pets were all very well behaved, then Bertie a miniature dachshund, decided he wanted a piece of the action, frequently interjecting with a yap. I thought perhaps that he was wanting to audition for the choir (was Jonathan listening?) but his owner thought that Bertie wanted to play with the guinea pigs he had met earlier. Sadly it was not to be.

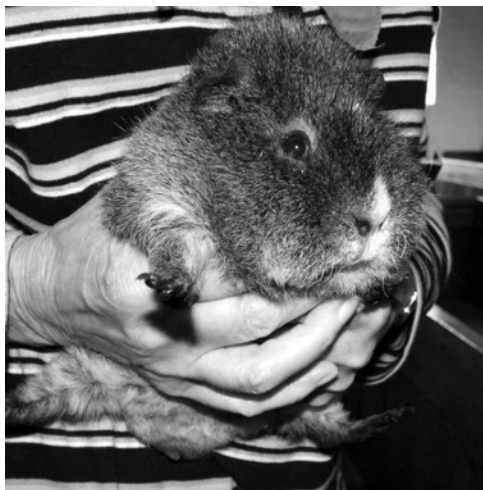
All hymns selected for the service reminded us how fortunate we are, and how grateful we should be, to have God's gifts of nature, with the colourful seasons and all they bring, not forgetting the many creatures around us.

Closing the service Dr Miller read a Russian prayer which again emphasised the care of animals, then came the final blessing followed by the blessing of each of our pets.

As usual the service was well organised, and it was disappointing that it was not so well supported as on previous occasions with the variety of animals brought along.

Thank you Kathy for your work in organising the service - we know this sort of thing does not just happen.

Valerie Smither



ST MARY'S PARISH OFFICE

Please note: the Parish Office will be closed during August, but messages will be regularly checked

Page 9 can be cut out if needed

Young Church Mag

21 August 2011, the Ninth Sunday after Trinity; Matthew 16:13-20

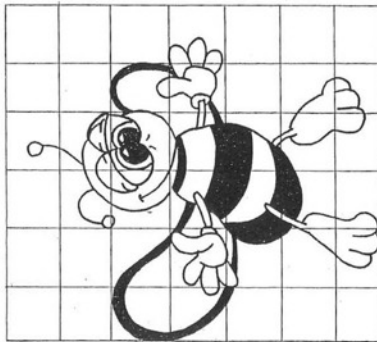
One day Jesus asked his disciples a difficult question—only Peter knew the answer!



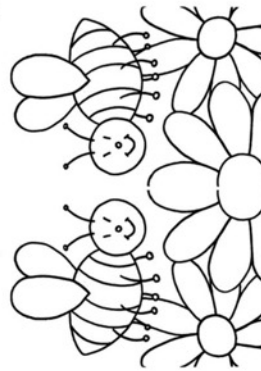
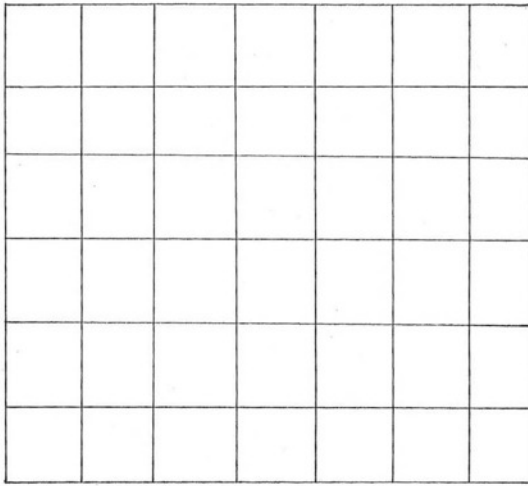
Jesus said that he would give Peter the keys of the Kingdom of Heaven

Produced by the Diocese of Bath and Wells, Youth and Children's Parish's Team
21 August 2011

Like St Peter, we all BEE-lieve!



Draw a big Bee in the big grid using the squares to help



My journey may be fast or
 my journey may be slow;
 may God be always with me
 wherever I may go.
 Amen

By the way, why did the old Bee fill in a form?
 To apply for his Buzz Pass!
 And what do young Bees like to have as pets?
 Humsters!

Page 10 can be cut out if needed

Use the letter code to find out

Jesus asked, "Who do people say I

1 = E	2 = A	3 = U	4 = I
5 = H	6 = M	7 = J	8 = S

7 six-letter words have been cut in half. You've got the first letter, and a clue to each one. Can you help Mary put them together?

M						
E						
S	a	u	c	e	r	
I						
A						
H						

Hed- Ins- -cer Ele- -ide

-les Sai- -pie App-

Mag- -ven -lor Sau ges

A black and white bird
Number in a football team
This goes under a cup
You'll find him on a ship
Not outside
Sweet, crunchy fruit
Birds build nests in them

St Peter's crest has crossed keys on it and an upside-down cross as a reminder that he was crucified upside down.

Could you design a crest for yourself?

Have you made a Will?

For just £69.00 + VAT Single Will
£95.00 + VAT for two Wills

A Consultant can visit you to take your Will instructions and offer guidance and advice

Call to make an appointment,
or for advice

0208 408 0836

We also specialise in drafting
Lasting Powers of Attorney



Exclusively Wills Ltd. are members of
the Society of Will Writers

Established in 1997

Abbeyfield

Where older people find care in housing

EWELL VILLAGE

Abbeyfield Ewell offers supported sheltered housing and is dedicated to making the lives of older people easier and more fulfilling. For over 45 years residents have enjoyed companionship and support in comfortable surroundings.

GROVE COTTAGE
10 CHEAM ROAD, EWELL VILLAGE KT17 1SN
and
WENDOVER HOUSE
266 CHESSINGTON ROAD WEST EWELL KT19 9XF

The Grove Cottage Voluntary Committee was set up by St Mary's Parish Church and friends from the United Reformed Church and Wendover House by volunteers from All Saints in West Ewell. Rotarians provided business advice and support.

Each house has a housekeeper who ensures that the house is comfortable, clean and safe. We offer two nutritious home-cooked meals a day, a communal lounge, dining room and attractive gardens. All rooms have en suite facilities. Your room is your private place to furnish with your personal possessions and to live in as you choose.

Our rooms are affordable and inclusive of all meals, heating and council tax. Come and have a look for yourself. Please telephone **020 8393 0881** or email abbeyfieldewellsoc@btinternet.com

Registered Charity No. 204444



All roofing and guttering repairs

**30 years experience covering
Worcester Park and close by**

Valleys, Bays etc.

All new work guaranteed

Free estimates

Special rates to O.A.P.s

J L Hellings & Son

Tel: 020 8942 1861
100 Kingsmead Avenue
Worcester Park KT4 8UT



The Rising Sun Epsom

14 Heathcote Road, Epsom KT18 5DX



A warm welcome awaits you. Award winning real ales and wine. A la carte Restaurant. Large landscaped garden with heated covered patio. Bar-B-Q. Function room.

Delicious dining in our restaurant or al fresco. Daily **specials** board.

All food cooked on the premises by our chefs and locally sourced where possible.

Large selection of **wines** by the bottle or glass. **Youngs** ales, many guest beers, lagers, ciders and soft drinks.

Having a do? Functions and parties are our speciality.

Come and see us about using our function room. We can tailor a menu to suit your taste and budget.



Wedding receptions, birthdays, work do's, meetings, club nights, parties, all functions catered for.

Enquiries call
01372 740809

Visit our website have a look see the menus

www.therisingsunepsom.com

Email mail@therisingsunepsom.com

ALFRED & EWART LONGHURST

FUNERAL DIRECTORS AND MONUMENTAL MASONS

- A complete, caring professional service
- Estimates and advice freely given for funerals and memorials
- Flexible pre-paid funeral plan - details on request

21-23, KINGSTON ROAD, EWELL

020 8393 1077



Calendar for August

- S 3 ST THOMAS**
0800 Holy Communion
0930 Sung Eucharist
1100 Choral Mattins

- S 7 TRINITY 7**
0800 Holy Communion
0930 Eucharist with hymns

- S 14 TRINITY 8**
0800 Holy Communion
0930 Eucharist with hymns

- S 21 TRINITY 9**
0800 Holy Communion
0930 Eucharist with hymns

W 24 and T 25 1100-1500 Children's Games Extravaganza

- S 28 DEDICATION FESTIVAL**
0800 Holy Communion
0930 Sung Eucharist
1030 Meeting to Elect a Churchwarden
1100 Choral Mattins
1115 Holy Communion to Priory Court

FROM THE PARISH RECORDS

HOLY MATRIMONY

A holy estate, instituted of God himself

2 July Marc Edward Gowie and
Leanne Danielle Martin

FUNERALS

And now, Lord, what is my hope? Truly my hope
is even in thee
(Psalm 39, used in the BCP Burial rite)

25 June Joy Cook, aged 86
 11 July Frederick Charles
 McCarthy, aged 92
 19 July Ernest Alexander Elkins,
 aged 98

COFFEE MORNINGS

WE MEET EVERY WEDNESDAY
FROM 10.30 am – 12 noon
IN THE CHURCH HALL

DO COME AND JOIN US

St Mary's Ewell Harvest Challenge

Saturday, 1 October

St. Mary's Church Hall
6:30 for 7:00 pm

Dinner and entertainment
More details next month!

Tickets £10 on sale early September

KENNETH J. EVE BUTCHERS and THE LARDER

Quality free range meats
And home cooked food
BBQ's -party in your own garden
we will come and cook
or just supply the food

Buffets - large or small any occasion
Funerals, birthdays, weddings
Ask to see our extensive range of menus

9 Corner House Parade
Epsom Road
Ewell Village
0208 393 3043

Easy Buy Appliances

Now Open in Ewell Village (Near Free Car Park)

Washing Machines, Dishwashers, Tumble Dryers
Fridges & Freezers, Gas & Electric Cookers
Vacuum Cleaners, Built in Appliances
All Types of small appliances

Open 9am - 5.30 (Mon-Fri) Quality products at low prices
9am - 5.00 (Sat) Free local delivery

5 Cheam Road, Ewell Village, Surrey KT17 1SP
020 8224 0916